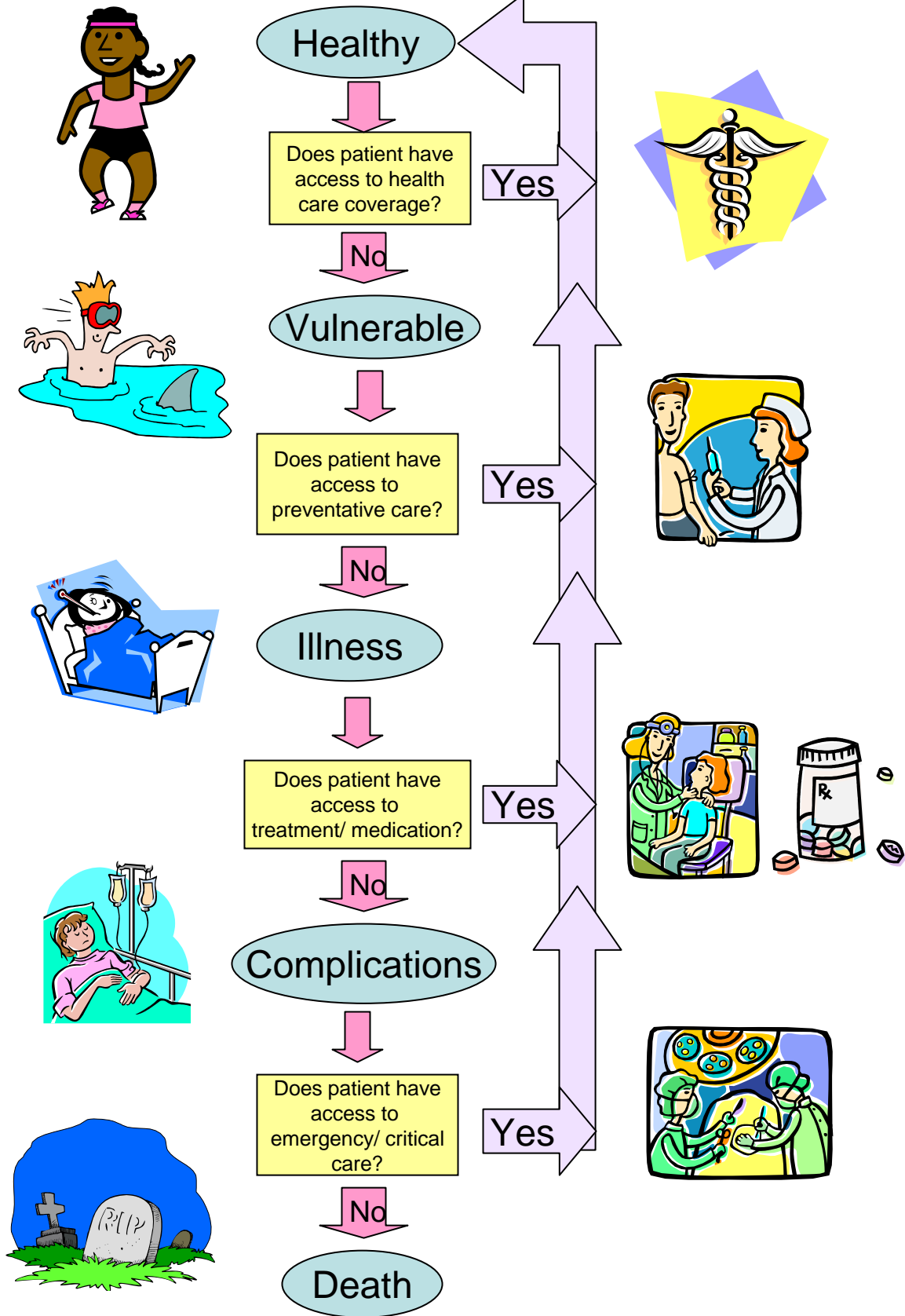


Effects of Healthcare Access on Illness

Progression of Illness

Intervention

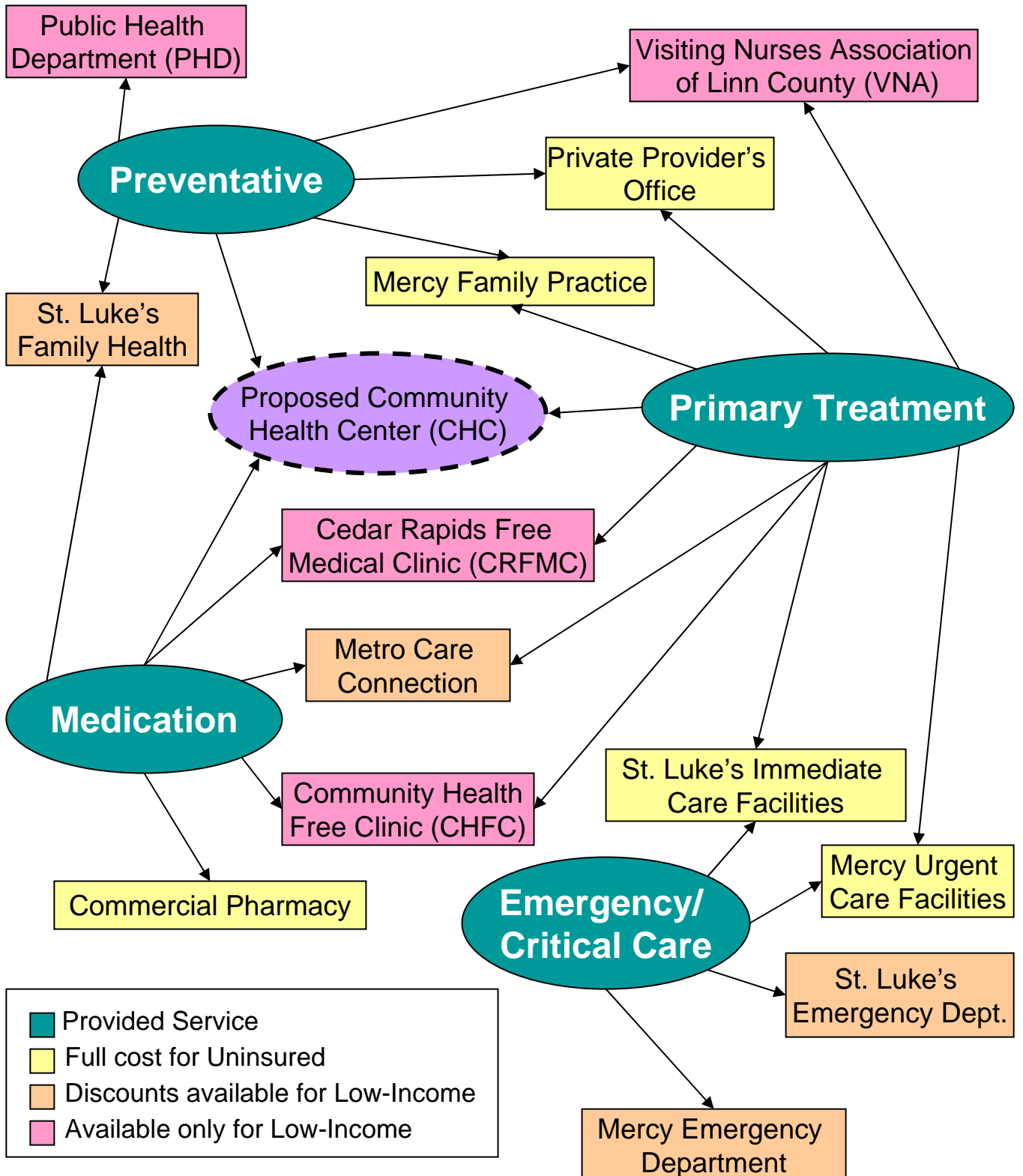


Family Income compared to Federal Poverty Income Level*

| Number of Persons in Household | | 100% | 133% | 150% | 200% | 400% | 600% |
|--------------------------------|---|----------|----------|----------|----------|-----------|-----------|
| | 1 | \$9,800 | \$13,034 | \$14,700 | \$19,600 | \$39,200 | \$58,800 |
| | 2 | \$13,200 | \$17,556 | \$19,800 | \$26,400 | \$52,800 | \$79,200 |
| | 3 | \$16,600 | \$22,078 | \$24,900 | \$33,200 | \$66,400 | \$99,600 |
| | 4 | \$20,000 | \$26,600 | \$30,000 | \$40,000 | \$80,000 | \$120,000 |
| | 5 | \$23,400 | \$31,122 | \$35,100 | \$46,800 | \$93,600 | \$140,400 |
| | 6 | \$26,800 | \$35,644 | \$40,200 | \$53,600 | \$107,200 | \$160,800 |
| | 7 | \$30,200 | \$40,166 | \$45,300 | \$60,400 | \$120,800 | \$181,200 |
| | 8 | \$33,600 | \$44,688 | \$50,400 | \$67,200 | \$134,400 | \$201,600 |

*Figures derived from 2006 Federal HHS Poverty Guidelines

Healthcare Service Providers in Cedar Rapids Area



Healthcare Programs for the Uninsured

| Family Income | Preventative Care | Primary Treatment | Medication | Emergency/ Critical Care |
|---------------|--|--|---|---|
| <133% | <ul style="list-style-type: none"> ▪ Medicaid~ ▪ Medicare~ ▪ Hawk-I~ ▪ Care for Yourself~ ▪ Mission Health ▪ IowaCare~ | <ul style="list-style-type: none"> ▪ Medicaid~ ▪ Medicare~ ▪ Hawk-I~ ▪ Mission Health ▪ IowaCare~ | <ul style="list-style-type: none"> ▪ Medicaid~ ▪ Hawk-I~ ▪ Medicare Part D~ ▪ IowaCare~ | <ul style="list-style-type: none"> ▪ Medicaid~ ▪ Medicare~ ▪ Hawk-I~ ▪ St. Luke's Charity Care ▪ Mercy Charity Care ▪ Mission Health ▪ IowaCare~ |
| 133%-150% | <ul style="list-style-type: none"> ▪ Medicare~ ▪ Hawk-I~ ▪ Care for Yourself~ ▪ Mission Health ▪ IowaCare~ | <ul style="list-style-type: none"> ▪ Medicare~ ▪ Hawk-I~ ▪ Mission Health ▪ IowaCare~ | <ul style="list-style-type: none"> ▪ Medicare Part D~ ▪ Hawk-I~ ▪ IowaCare~ | <ul style="list-style-type: none"> ▪ Medicare~ ▪ Hawk-I~ ▪ St. Luke's Charity Care ▪ Mercy Charity Care ▪ Mission Health ▪ IowaCare~ |
| 150%-200% | <ul style="list-style-type: none"> ▪ Medicare~ ▪ Hawk-I ~ ▪ Care for Yourself~ ▪ Mission Health ▪ IowaCare~ | <ul style="list-style-type: none"> ▪ Medicare~ ▪ Hawk-I ~ ▪ Mission Health ▪ IowaCare~ | <ul style="list-style-type: none"> ▪ Medicare Part D~ ▪ Hawk-I ~ ▪ IowaCare~ | <ul style="list-style-type: none"> ▪ Medicare~ ▪ Hawk-I ~ ▪ St. Luke's Charity Care ▪ Mercy Charity Care ▪ Mission Health ▪ IowaCare~ |
| 200%-400% | <ul style="list-style-type: none"> ▪ Medicare~ ▪ Care for Yourself *~ | <ul style="list-style-type: none"> ▪ Medicare~ | <ul style="list-style-type: none"> ▪ Medicare Part D~ | <ul style="list-style-type: none"> ▪ Medicare~ ▪ St. Luke's Charity Care ▪ Mercy Charity Care |
| >400% | <ul style="list-style-type: none"> ▪ Medicare~ | <ul style="list-style-type: none"> ▪ Medicare~ | <ul style="list-style-type: none"> ▪ Medicare Part D~ | <ul style="list-style-type: none"> ▪ Medicare~ ▪ St. Luke's Charity Care ▪ Mercy Charity Care |

* Program does not cover entire income range
 ~Program does not cover all demographics

Discount Healthcare Providers

| Family Income | Preventative Care | Primary Treatment | Medication | Emergency/ Critical Care |
|---------------|--|---|---|--|
| <133% | <ul style="list-style-type: none"> ▪ CHFC ▪ CRFMC ▪ St. Luke's Family Health~ ▪ Metro Care~ ▪ PHD~ ▪ VNA ▪ <u>Proposed CHC</u> | <ul style="list-style-type: none"> ▪ CHFC ▪ CRFMC ▪ Metro Care~ ▪ VNA ▪ <u>Proposed CHC</u> | <ul style="list-style-type: none"> ▪ CHFC ▪ CRFMC ▪ St. Luke's Family Health~ ▪ <u>Proposed CHC</u> | <ul style="list-style-type: none"> ▪ St. Luke's ER ▪ Mercy Medical Center ER |
| 133%-150% | <ul style="list-style-type: none"> ▪ CHFC ▪ CRFMC ▪ St. Luke's Family Health~ ▪ Metro Care~ ▪ PHD~ ▪ VNA ▪ <u>Proposed CHC</u> | <ul style="list-style-type: none"> ▪ CHFC ▪ CHFMC ▪ Metro Care~ ▪ VNA ▪ <u>Proposed CHC</u> | <ul style="list-style-type: none"> ▪ CHFC ▪ CHFMC ▪ St. Luke's Family Health~ ▪ <u>Proposed CHC</u> | <ul style="list-style-type: none"> ▪ St. Luke's ER ▪ Mercy Medical Center ER |
| 150%-200% | <ul style="list-style-type: none"> ▪ CHFC ▪ CRFMC ▪ St. Luke's Family Health~ ▪ Metro Care~ ▪ PHD~ ▪ VNA* ▪ <u>Proposed CHC</u> | <ul style="list-style-type: none"> ▪ CHFC ▪ CRFMC ▪ Metro Care~ ▪ VNA* ▪ <u>Proposed CHC</u> | <ul style="list-style-type: none"> ▪ CHFC ▪ CRFMC ▪ St. Luke's Family Health~ ▪ <u>Proposed CHC</u> | <ul style="list-style-type: none"> ▪ St. Luke's ER ▪ Mercy Medical Center ER |
| 200%-400% | <ul style="list-style-type: none"> ▪ CHFC ▪ CRFMC ▪ Metro Care~ ▪ PHD~ ▪ St. Luke's Family Health~ ▪ <u>Proposed CHC</u> | <ul style="list-style-type: none"> ▪ CHFC ▪ CRFMC ▪ Metro Care~ ▪ <u>Proposed CHC</u> | <ul style="list-style-type: none"> ▪ CHFC ▪ CRFMC ▪ St. Luke's Family Health~ ▪ <u>Proposed CHC</u> | <ul style="list-style-type: none"> ▪ St. Luke's ER ▪ Mercy Medical Center ER |
| >400% | <ul style="list-style-type: none"> ▪ CHFC ▪ CRFMC ▪ Metro Care~ ▪ PHD~ ▪ St. Luke's Family Health~ ▪ <u>Proposed CHC</u> | <ul style="list-style-type: none"> ▪ CHFC ▪ CRFMC ▪ Metro Care~ ▪ <u>Proposed CHC</u> | <ul style="list-style-type: none"> ▪ CHFC ▪ CRFMC ▪ St. Luke's Family Health~ ▪ <u>Proposed CHC</u> | <ul style="list-style-type: none"> ▪ St. Luke's ER ▪ Mercy Medical Center ER |

* Program does not cover entire income range
 ~Program does not cover all demographics

Programs/ Providers Available by Age and Gender for Income <200% FPI

18-45 yrs. old

<18 yrs. old

>45 yrs. old

Preventative:
-PHD Immunizations

Preventative/ Primary Treatment:
-Proposed CHC
-Metro Care Connection
-Community Health Free Clinic
-Cedar Rapids Free Medical Clinic
-Mission Health

Emergency/ Critical Care
-St. Luke's Charity Care
-Mercy Charity Care
-Mission Health

Comprehensive:
-Medicaid*
-Hawk-I

Preventative:
-St. Luke's Family Health~

Preventative/ Primary Treatment:
-Proposed CHC
-Community Health Free Clinic
-Cedar Rapids Free Medical Clinic
-Visiting Nurses Association*
-Mission Health

Emergency/ Critical Care:
-St. Luke's Charity Care
-Mercy Charity Care
-Mission Health

Comprehensive:
-IowaCare

Preventative:
-St. Luke's Family Health

Preventative/ Primary Treatment:
-Proposed CHC
-Mission Health
-Visiting Nurses Association*
-Community Health Free Clinic
-Cedar Rapids Free Medical Clinic

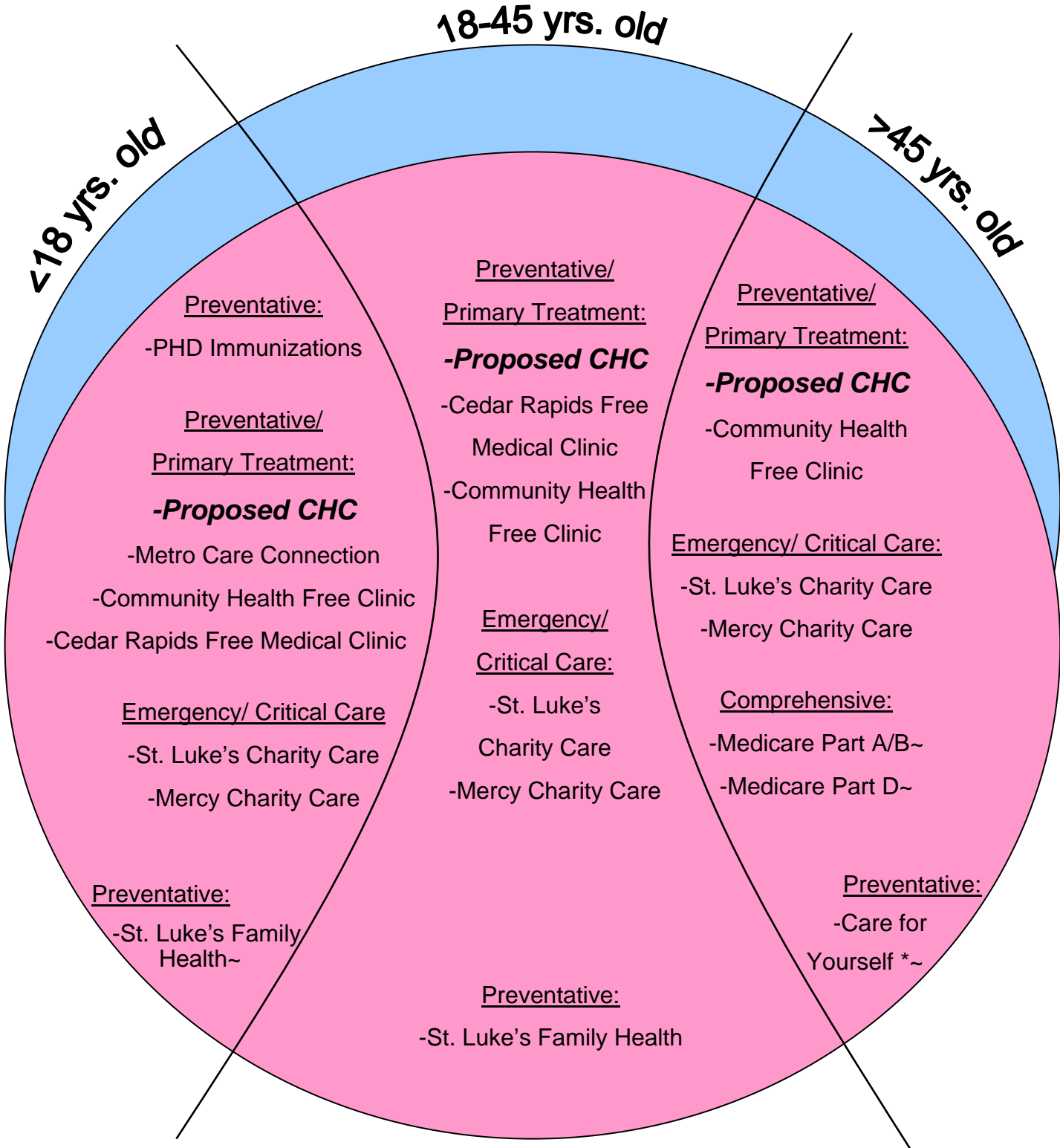
Emergency/ Critical Care:
-St. Luke's Charity Care
-Mercy Charity Care
-Mission Health

Comprehensive:
-Medicare Part A/B/D~
-Medicaid*~
IowaCare~

Preventative:
-Care for Yourself~

* Program does not cover entire income range
~Program does not cover entire age range

Programs/ Providers Available by Age and Gender for Income 200-400% FPI



* Program does not cover entire income range
 ~Program does not cover entire age range